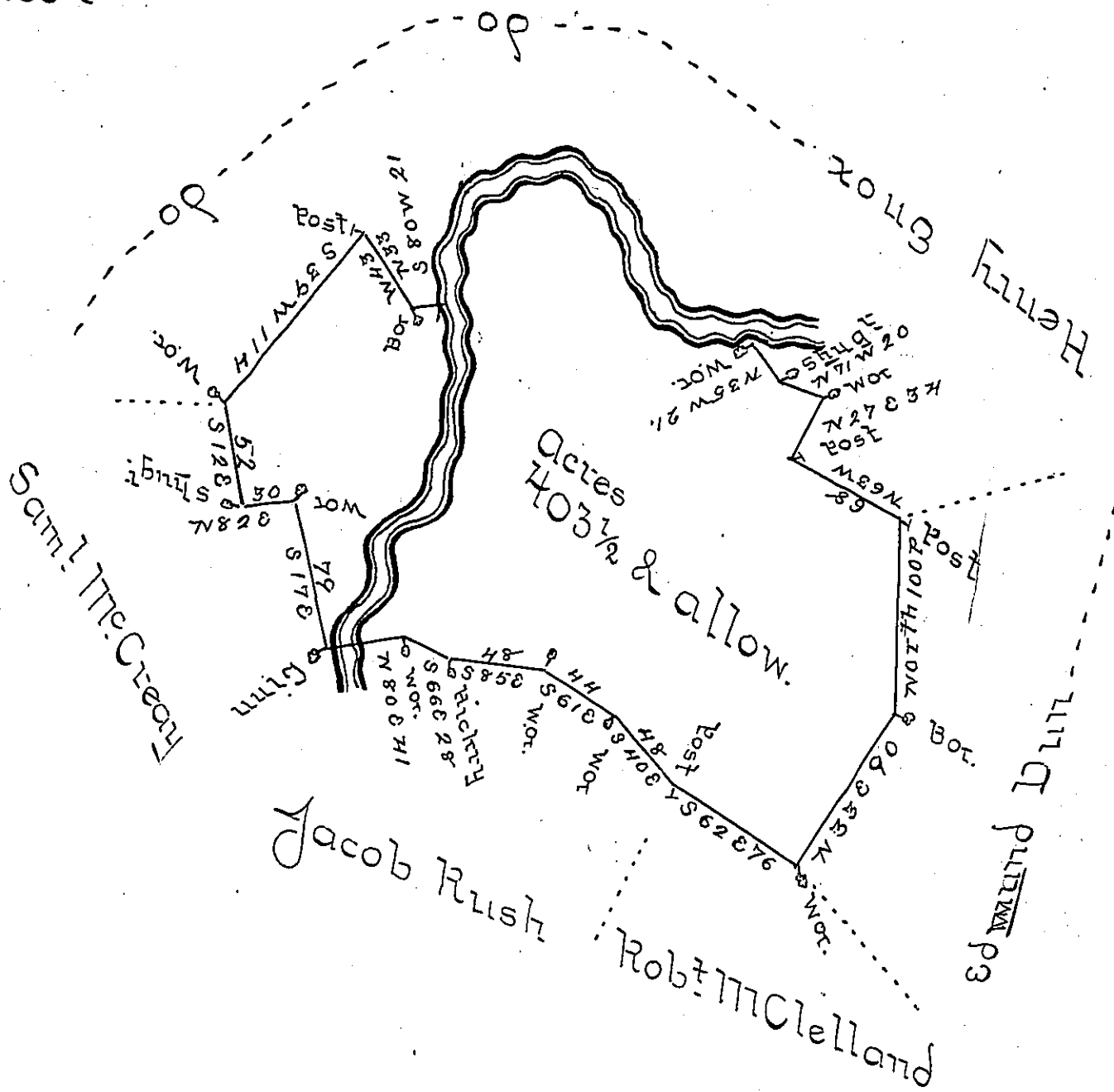


Course & Dist up
Ten mile Creek

- N 77 W 55
- N 26 W 62
- N 52 W 33
- S 77 W 22
- S 41 W 50
- S 36 30



The above is a Draught of a Tract of Land situate on
 Ten mile Creek Washington County Surveyd. August
 29th 1755 in pursuance of a Warrant granted to John
 Wright Dated July 27th 1754 Called Port Tobacco
 Containing 403 Acres and 50 perches with the Usual Allow-
 ance of 6 Percent for Roads &c.

John Lukens Esqr Secy

David Redick D.S.

IN TESTIMONY that the above is a copy of the original remaining on file in
 the Department of Internal Affairs of Pennsylvania, made
 conformably to an Act of Assembly approved the 16th day of
 February, 1833, I have hereunto set my Hand and caused
 the Seal of said Department to be affixed at Harrisburg,

this fifth day of June 1900

James W. Lewis
 Secretary of Internal Affairs.